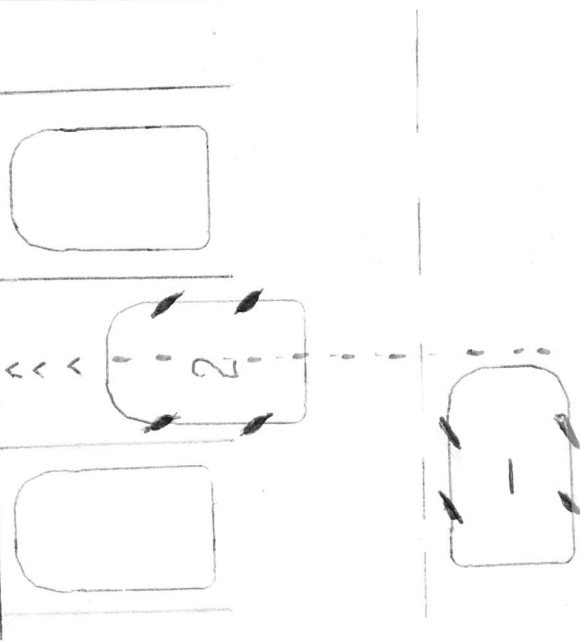


PARK AND PULL THE CAR FROM PARKING LOT

This is a simple step for new learner, it is advice to practice parking to the Left before the Right

A. Park to the left side

1. The head of the car close to the center of the intended parking space, vehicle is at Stopping position.
2. Turn the wheel all the way to the Left then slowly move Vehicle toward the space, when being straight Stop then.
3. Turn the wheel to straight position then move the space.



A. Park to the Right side

Move the vehicle to the Left

the do the opposite stepping

